

# ENCOR

- Platform Setup Guide,
- Microsoft SQL 2008 Server
- Version 1.0.0.0
- 
- 



## ENCOR Platform Setup Guide, Microsoft SQL 2008 Server

Date of Issue	Product ID Num.	Part Number	Brief Description
December 2017	45002/074	89000911	1.0.0.0 Release
December 2018	45002/074	89000926	1.0.0.0 Release (Updated)

©Copyright NCR Corporation 1995-2018  
All rights reserved

This publication is protected by federal copyright law. This document and its contents are the proprietary, confidential information and property of NCR Corporation ("NCR"). Unauthorized disclosure, reproduction, distribution or use of this document and/or its contents in any form is strictly prohibited. No part of this publication may be reproduced or transmitted into any human or computer language in any form or by any means, stored in a retrieval system, transmitted, redistributed, translated or disclosed to third parties, or de-compiled in any way including, but not limited to, photocopy, photograph, electronic, mechanical, magnetic or manual without the express written permission of NCR or its licensors, if any. This document, notwithstanding the above, may be distributed in electronic or printed form by NCR to personnel who are employed by either (a) a licensee and end user of the subject system of this document or (b) personnel from an authorized NCR Channel Partner or Solution Provider of the subject system of this document. All copies of this document so distributed and/or so authorized, shall contain a full copy of this copyright notice.

NCR has prepared this document as a guide to the proper installation, operation, customization and/or maintenance of NCR products. The drawings and specifications contained herein are the property of NCR and/or its licensors.

NCR endeavors to ensure that the information in this document is correct and fairly stated but does not accept liability for any error or omission. NCR makes no representation or warranties with respect to the contents hereof, and specifically disclaims any implied warranties of merchantability or fitness for a particular purpose or non-infringement. No commitments by NCR or its suppliers are made by or from this documentation which is provided for information only.

Development of NCR products and documentation is continuous: NCR reserves the right to revise this publication and to make changes at any time to the contents hereof or to the products herein described or discussed without notice and without any obligation for NCR to notify any person or organization of such revision or changes. Information published in this document will likely be superseded, and it is recommended that users regularly check for updates and newer versions.

The trademarks NCR, Retailix, StoreNext, ISS45, ScanMaster, R10, ACS, PocketOffice, RPO, RBO, ABO, Connected Payments, ServerEPS, Connected Services, Connected Loyalty, WinEPS and all other NCR product names are registered trademarks or trademarks of NCR; all other trademarks or registered trademarks are the property of their respective owners. Third-party products, services, or company names referenced in this document may be trademarked or copyrighted by their respective owners, and are for identification purposes only. Copyrights, trademarks and license agreements shall be governed and construed in accordance with the laws of the State of New York and the Federal Arbitration Act, and shall benefit NCR, its successors, and assigns.

Address comments and corrections regarding this document to:

**Attn: Software Program Director**  
NCR  
797 Commonwealth Drive  
Warrendale, PA 15086

# Table of Contents

---

<i>Chapter 1:</i>	Overview .....	1-1
<i>Chapter 2:</i>	SQL Server 2008 Installation.....	2-1
<i>Chapter 3:</i>	Backwards Compatibility (SQLDMO) SQLServer2005_BC.msi.	3-1
<i>Chapter 4:</i>	SQLServer 2008 Service Pack 1 Installation.....	4-1
<i>Chapter 5:</i>	Enable Named Pipes.....	<b>Error! Bookmark not defined.</b>
<i>Chapter 6:</i>	Disable Data Execution Prevention (DEP) .....	5-1

---

# Revision Record

---

Issue	Date	Remarks
A	Dec 2017	First issue

---

# Chapter 1: Overview

---

This document will guide you through the installation of:

- SQL Server 2008
- SQLDMO pack install
- SQL Service 2008 Service Pack 1
- Enabling Named Pipes
- Disabling Data Execution Prevention (DEP)

The minimum recommended hardware requirements for SQL 2008 Standard Edition (32-bit/64-bit) and **ENCOR** are:

- CPU = P4 - 2.0 GHz or higher
- RAM = 4 GB or higher
- HD = 80 GB or higher

Software requirements for MFS1 are:

- Windows 7 Professional 32-bit/64-bit
- Windows Server 2008 Standard Server (32-bit) / Server 2008 R2 (64-bit)

**Note:**

Windows Server 2000 is no longer supported by SQL Server 2008.

Prerequisites (\* = Installed by installation wizard if they do not exist)

- .Net Framework 3.5sp1
- SQL Server Native Client\*
- SQL Server Setup Support Files\*
- Internet Explorer 7
- SQLDMO Pack (backward compatibility)

**Note:**

The user must be logged into Windows as the Administrator User when installing any **ENCOR** related applications on MFS1, LFS Workstation, or POS Terminal.

---

# Chapter 2: SQL Server 2008 Installation

---

1. From the CD or from the folder containing the SQL source files, click **setup.exe**. SQL Server Installation Center is displayed.



Figure 2-1. SQL Server Installation Center - Planning

2. On the left side, click the **Installation** tab. Installation options are displayed.

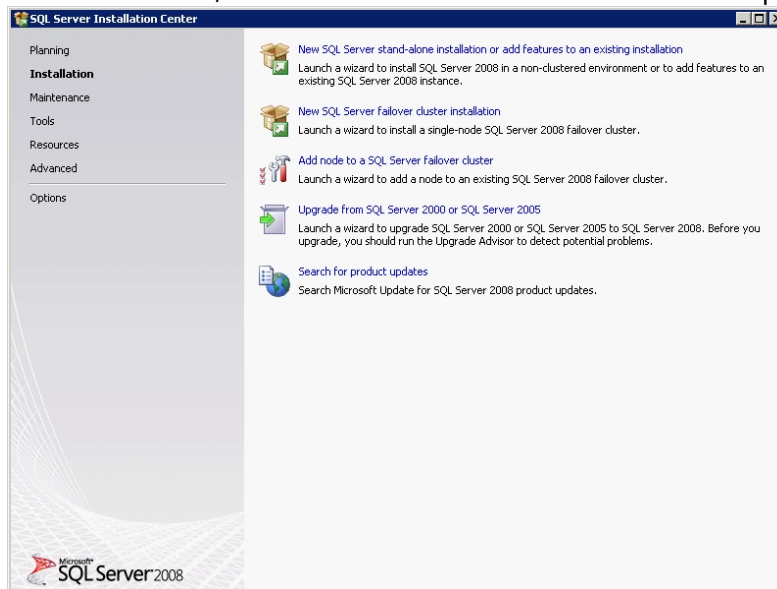


Figure 2-2. SQL Installation Center - Installation

3. Select the top hyperlink: **New SQL Server stand-alone installation or add features to an existing installation**. An SQL Server 2008 message appears and then the Setup Support Rules screen will be displayed.

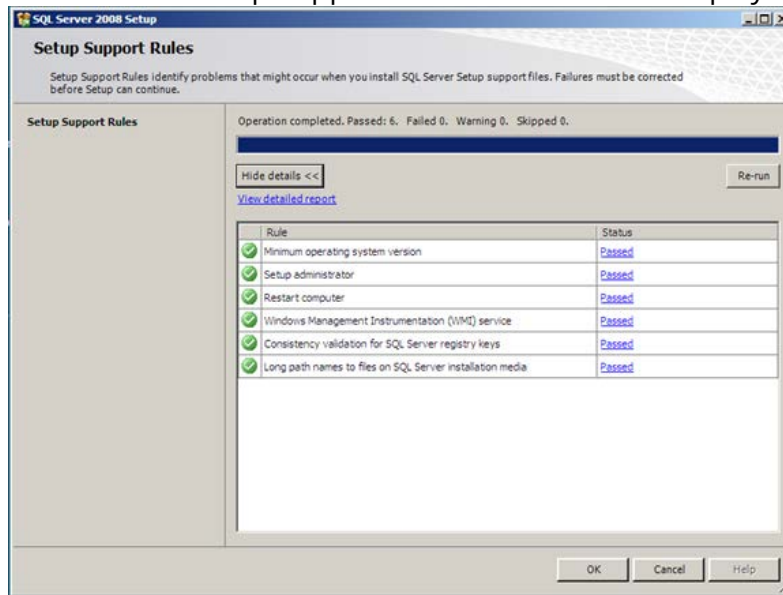


Figure 2-3. SQL Server 2008 Setup - Setup Support Rules

4. Click . The SQL Server 2008 Setup License Terms screen is displayed.



Figure 2-4. SQL Server 2008 Setup - License Terms

5. Approve the license agreement by checking the  I accept the license terms. checkbox. The Product Key screen is displayed:

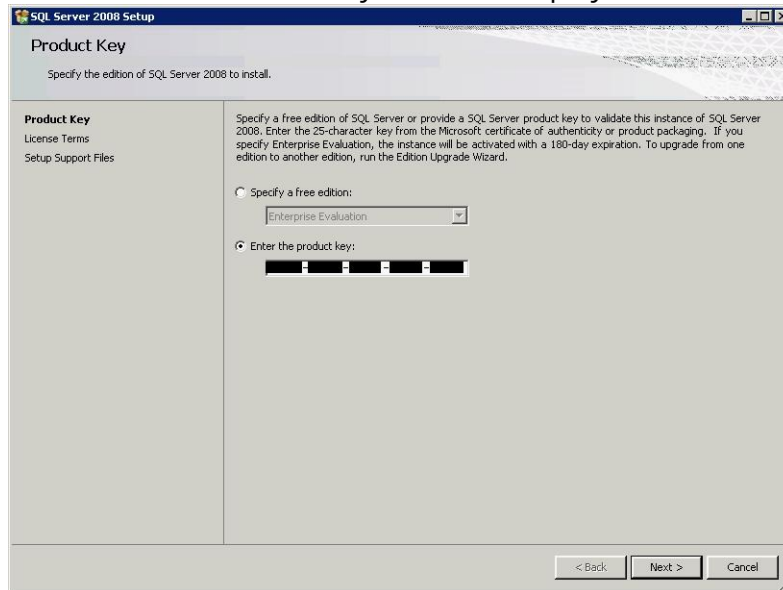


Figure 2-5. SQL Server 2008 Setup - Product Key

6. Enter your product license key and click . The Feature Selection screen is displayed.

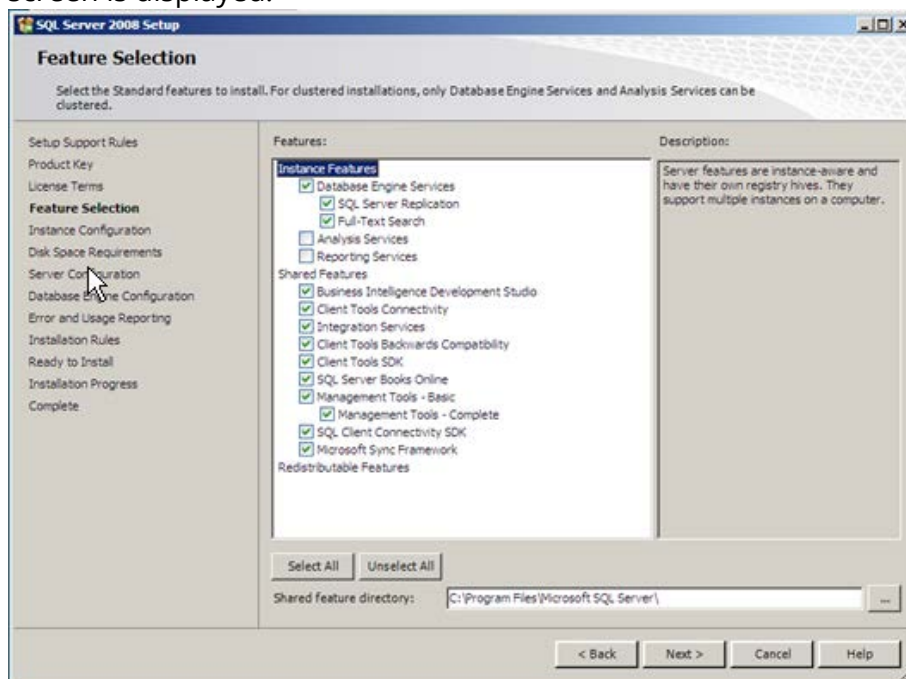


Figure 2-6. SQL Server 2008 Setup - Feature Selection

7. Click **Select All** and then uncheck **Analysis Services** and **Reporting Services**.

8. Click **Next >** to continue. The Instance Configuration screen is displayed.

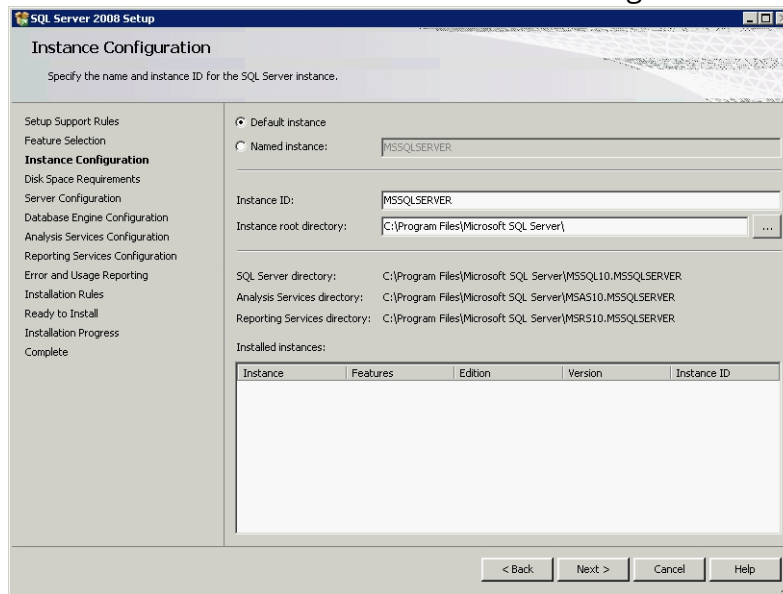


Figure 2-7. SQL Server 2008 Setup - Instance Configuration

9. Accept all defaults and click **Next >**. The Disk Space Requirements screen is displayed.

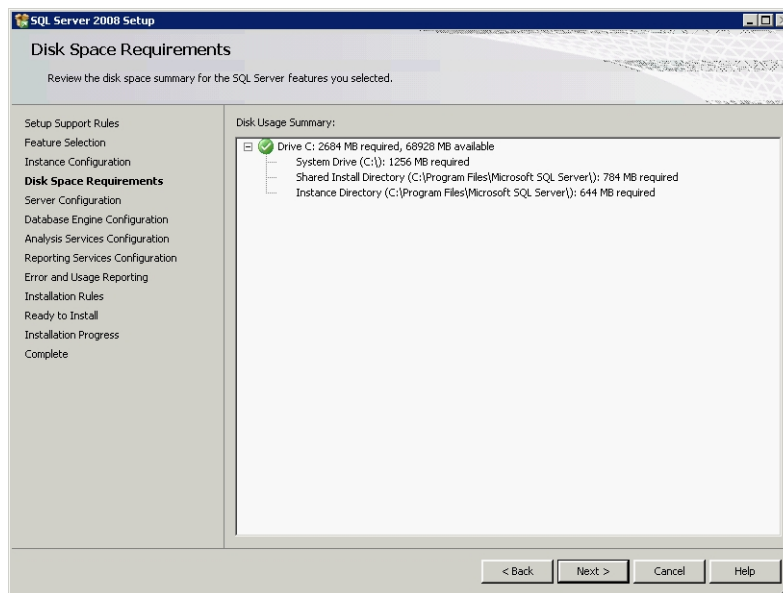


Figure 2-8. SQL Server 2008 Setup - Disk Space Requirements

10. Click **Next >**. The Server Configuration screen is displayed.

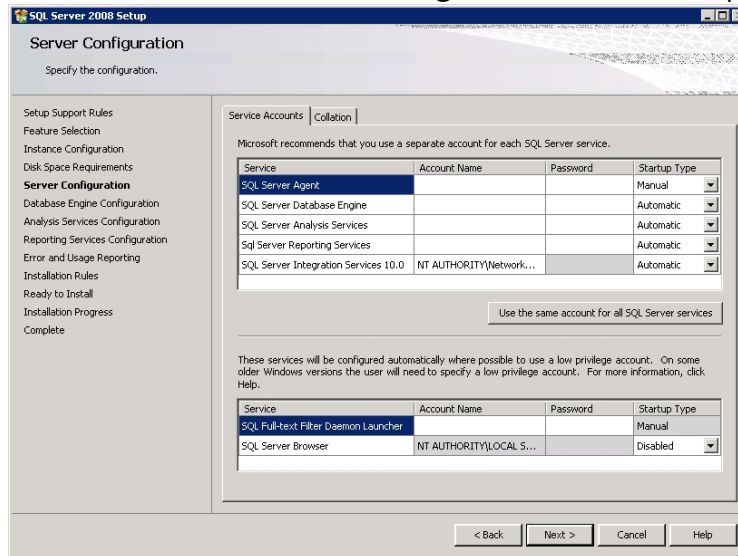


Figure 2-9. SQL Server 2008 Setup - Server Configuration

11. Click **Use the same account for all SQL Server services**. The Use the same account for all SQL Server 2008 Services dialog box is displayed.

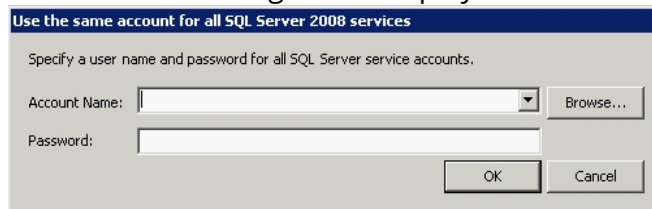


Figure 2-10. SQL Server 2008 Setup - Use the same account for all SQL Server 2008 services

12. Enter the administrator name and password and click **OK**. The Server Configuration screen displays.

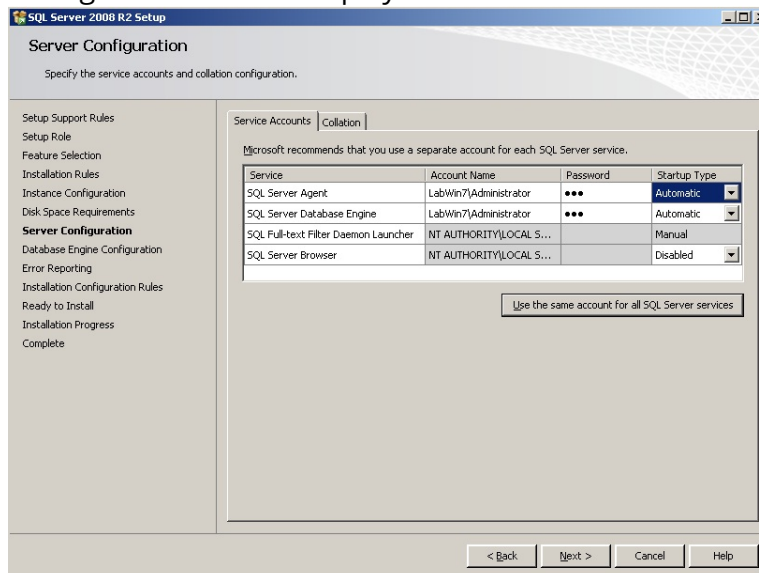


Figure 2-11. SQL Server 2008 Setup - Server Configuration

13. Select the **Collation** tab and insure the collation is configured as:  
**SQL\_Latin1\_General\_CP1\_CI\_AS**

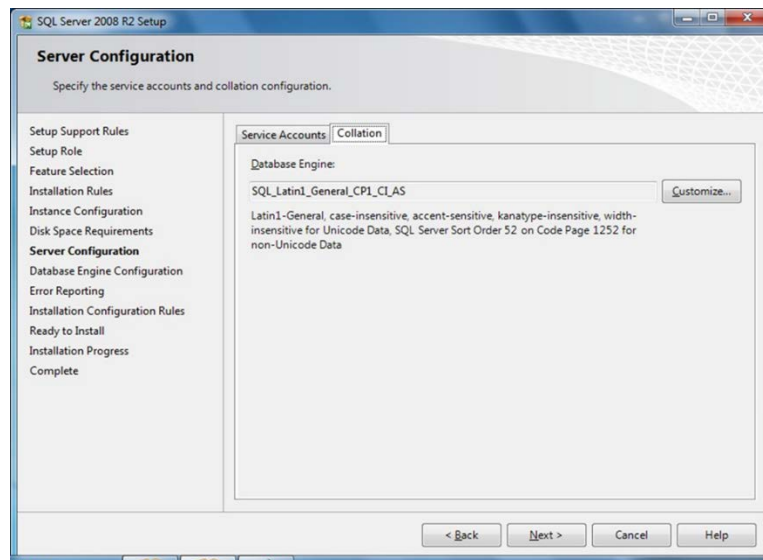


Figure 2-12. SQL Server 2008 Setup - Customize the SQL Server 2008 Database Engine Collation

14. Click **Next >**. The Database Engine Configuration screen is displayed.

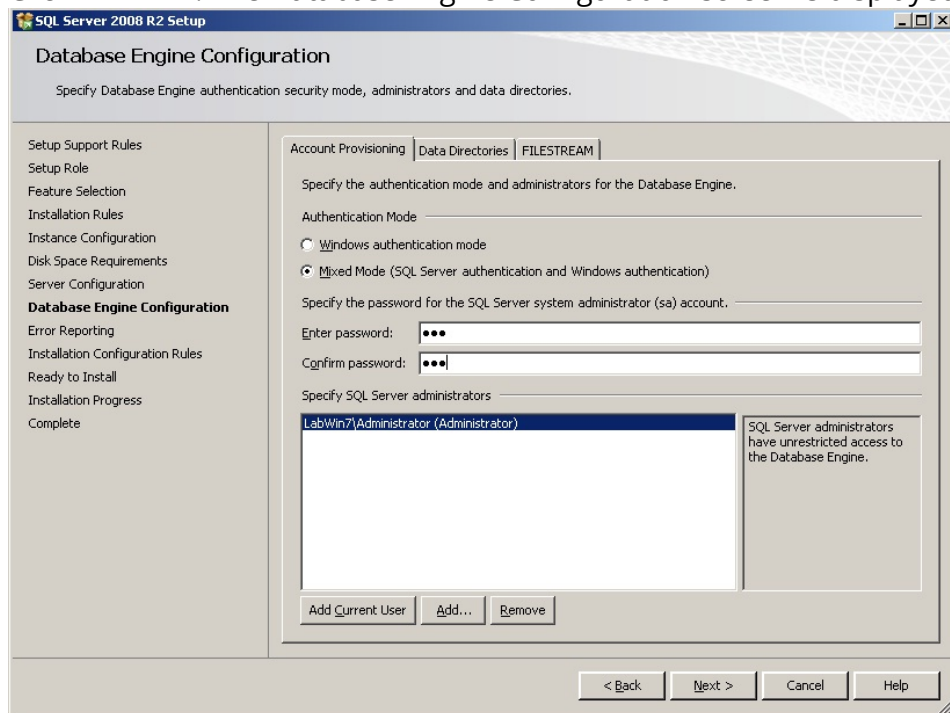
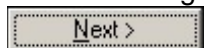


Figure 2-123. SQL Server 2008 Setup - Database Engine Configuration

15. Select the **Mixed Mode (Windows Authentication and SQL Server Authentication)**

Enter a Strong Password (i.e. Store123!!!) and confirm then Click



## 16. The Error and Usage Reporting Screen displays.

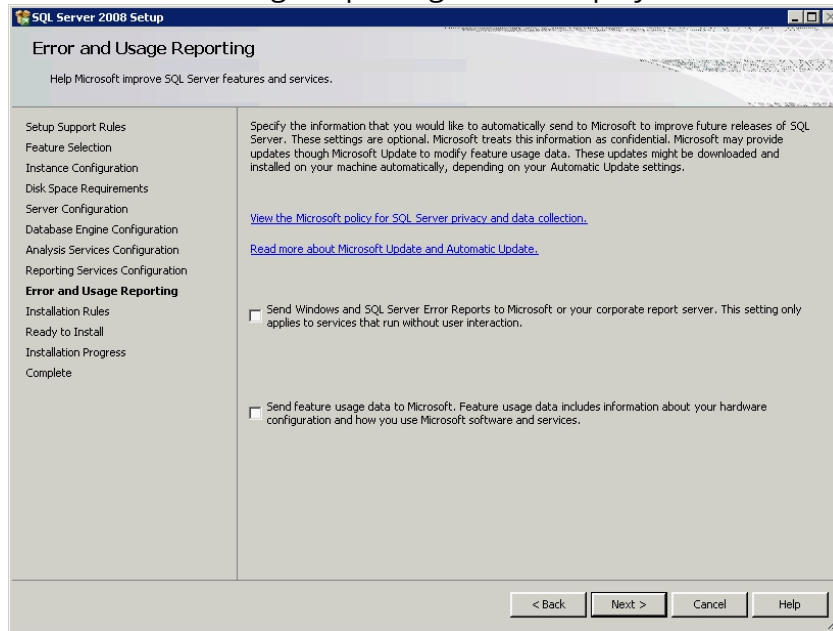


Figure 2-13. SQL Server 2008 Setup - Error and Usage Reporting

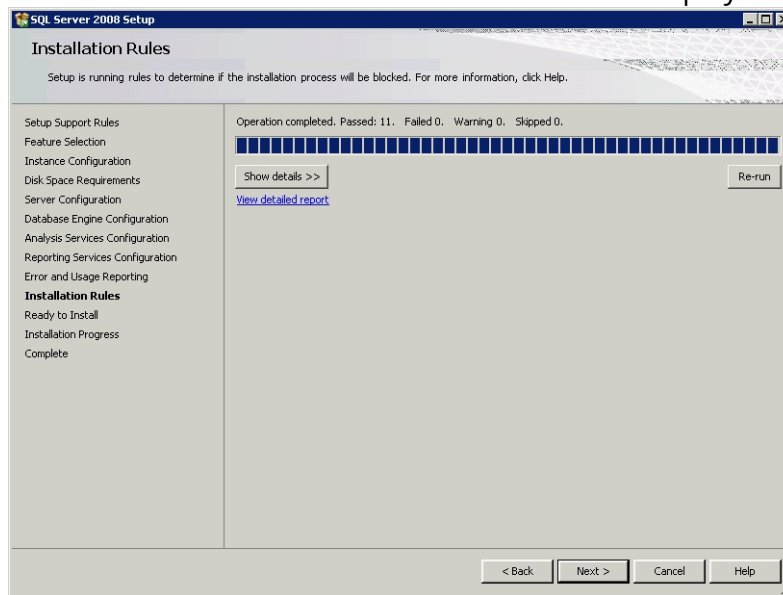
17. Click . The Installation Rules screen displays.

Figure 2-15. SQL Server 2008 Setup - Installation Rules

18. Click **Next >**. The Ready to install screen is displays.

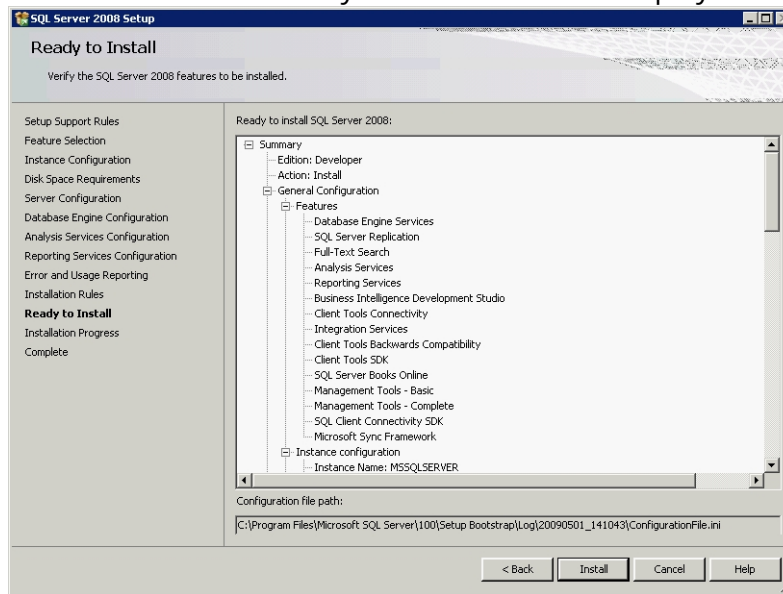


Figure 2-14. SQL Server 2008 Setup - Ready to Install

19. Click **Install** to start the SQL installation process; the Installation Progress screen is displayed.

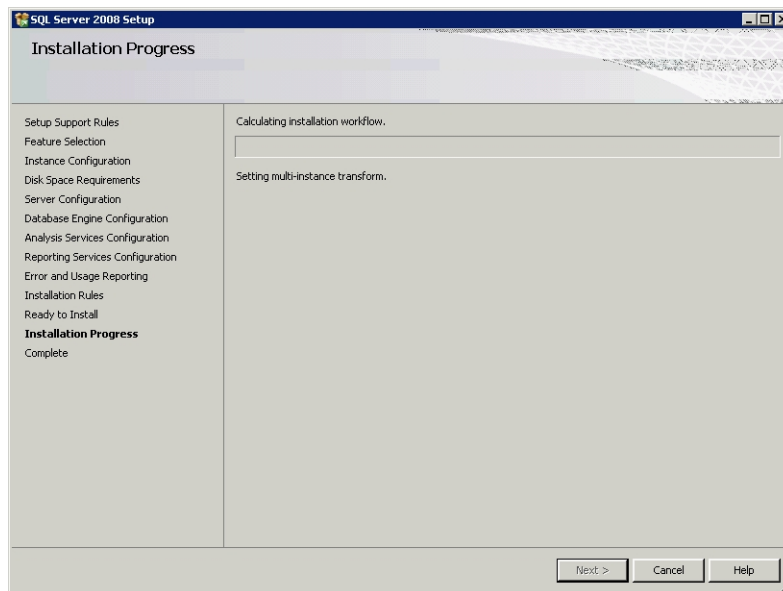


Figure 2-17. SQL Server 2008 Setup - Installation Progress

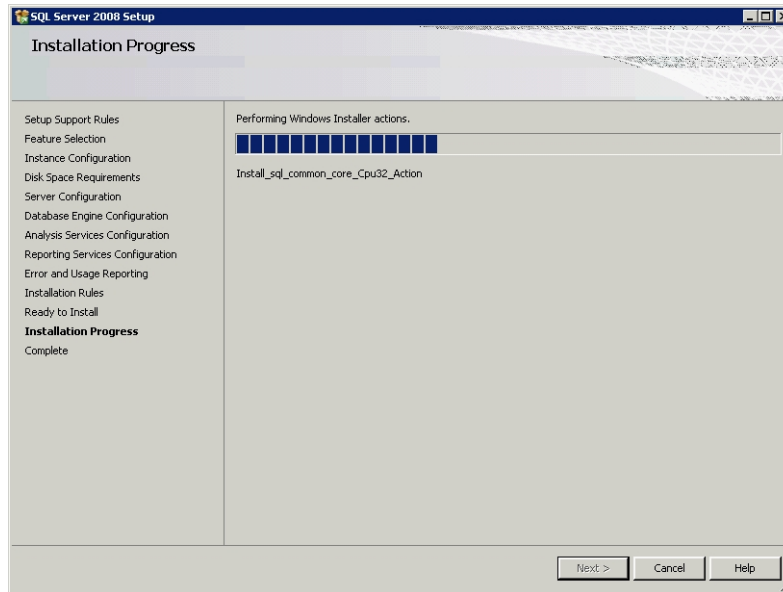


Figure 2-18. SQL Server 2008 Setup - Installation Progress

## 20. View the details of the install.

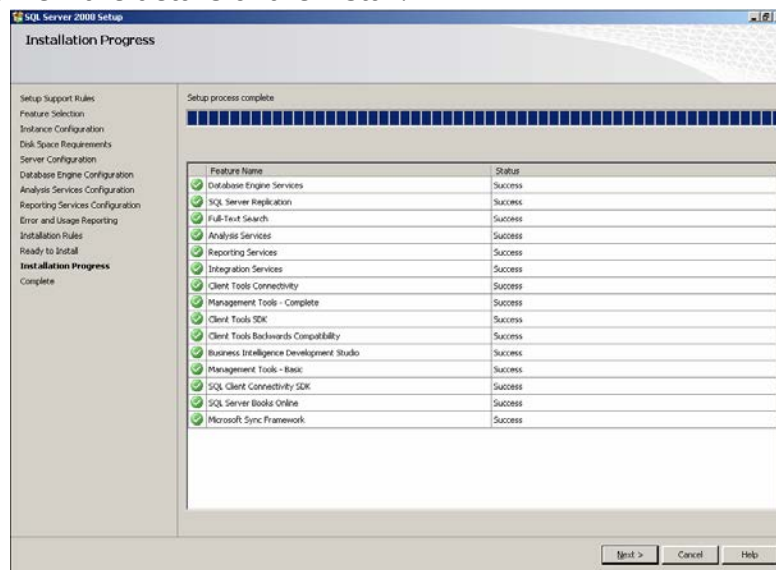


Figure 2-19. SQL Server 2008 Setup - Installation Progress Details

21. Click **Next >**. The SQL Server 2008 Setup Complete screen is displayed.

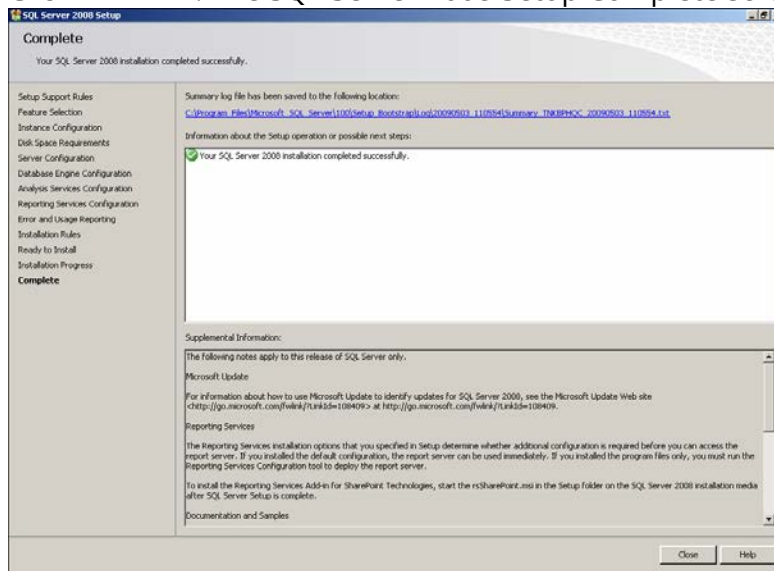


Figure 2-15. SQL Server 2008 Setup - Complete

22. Click **Close** to finish the SQL install. It is recommended that MFS1 be rebooted now.

---

# Chapter 3: Backwards Compatibility (SQLDMO) SQLServer2005\_BC.msi

---

**Note:**

The SQL Compatibility installs can be found on the **ENCOR 1.0.0.0** Release in the `\SQLComp\x32` or `\SQLComp\x64` sub folders or the SQL Server 2008 Workgroup Edition CD `\1033_ENU_LP \x86\setup\x86` for 32bit and `\x64\setup\x64` for 64bit.

1. Run `SQLServer2005_BC.msi`.

Example from the Workgroups CD

On 32-bit:

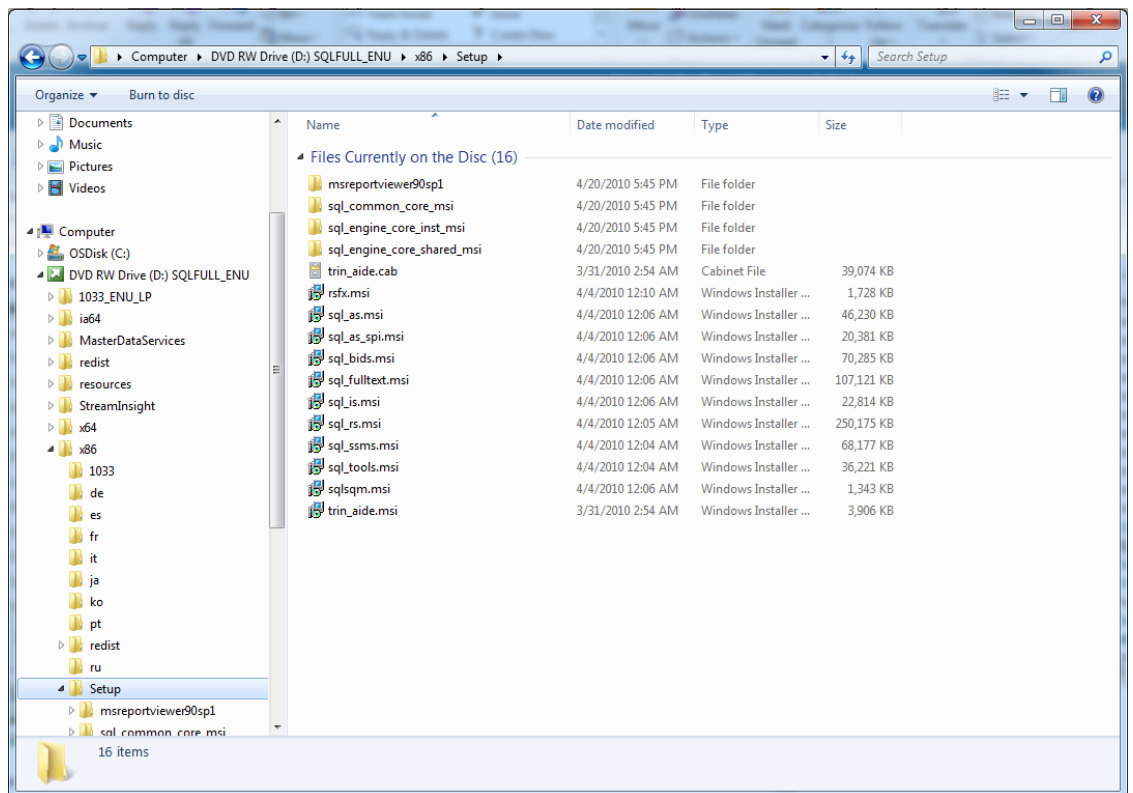


Figure 3-1. SQLServer2005\_BC.msi 32-bit

On 64-bit:

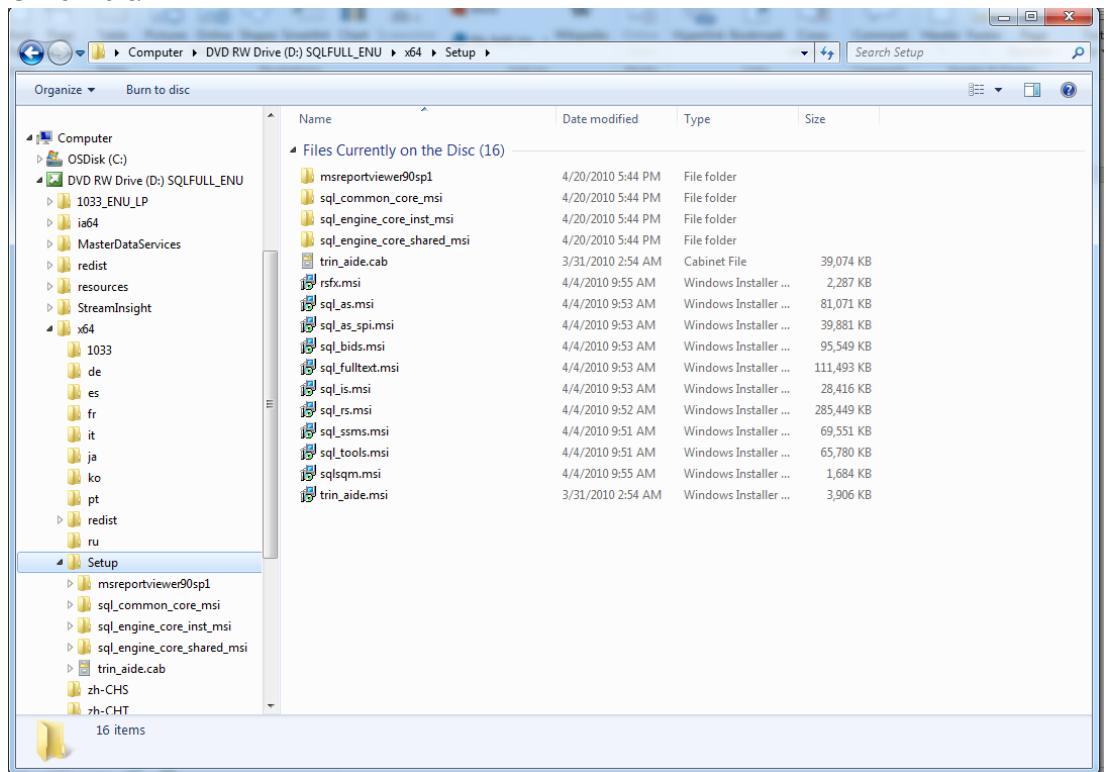


Figure 3-2. SQLServer2005\_BC.msi 64-bit

2. On the License Agreement screen, select the **I accept the terms in the license agreement** radio button, and click **Next**.

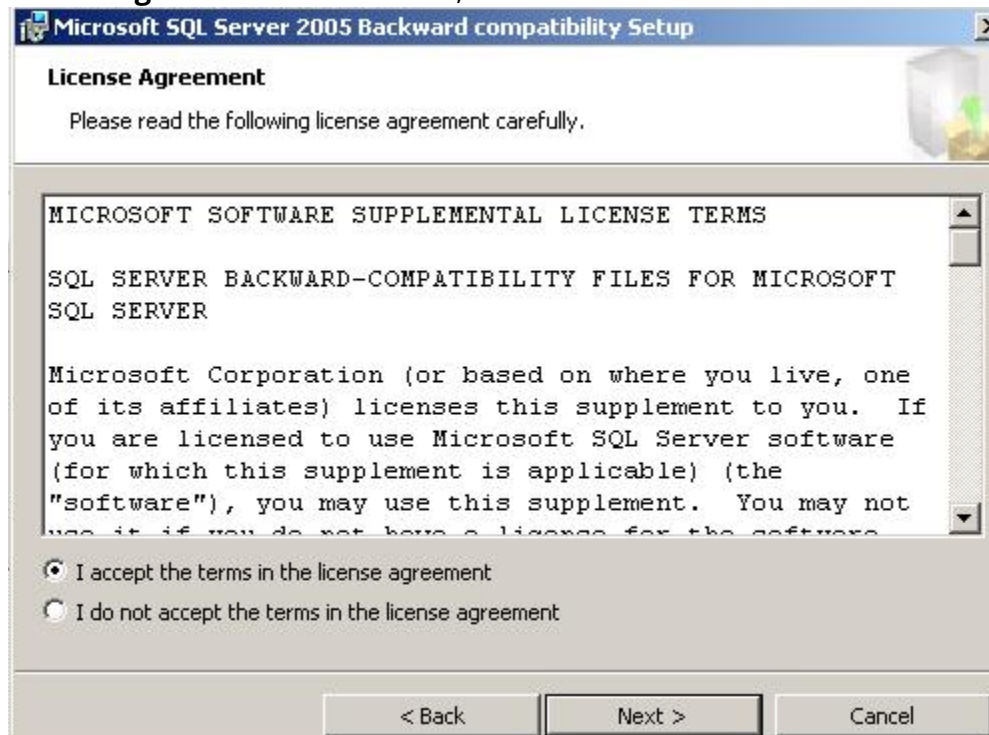


Figure 3-3. SQL Server 2005 Backward compatibility Setup - License Agreement

3. On the Registration Information screen, enter user information and then click **Next**.

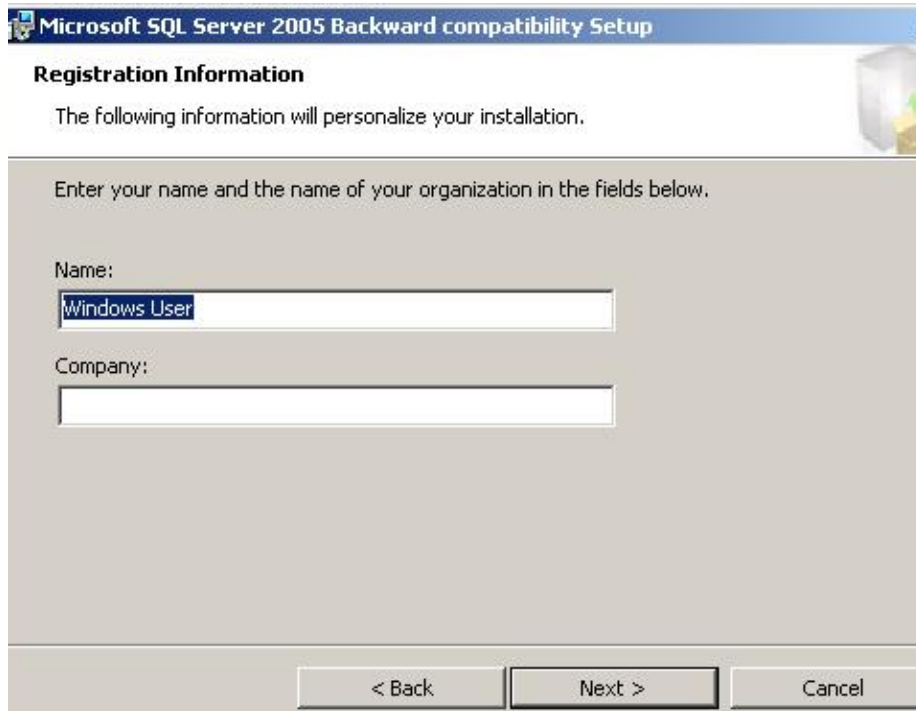


Figure 3-4. SQL Server 2005 Backward compatibility Setup - Registration Information

4. Microsoft SQL Server 2005 Backward compatibility Setup is displayed. Click **Next**.



Figure 3-5. SQL Server 2005 Backward compatibility Setup - Welcome

5. Feature Selection is displayed. Click **Next**.

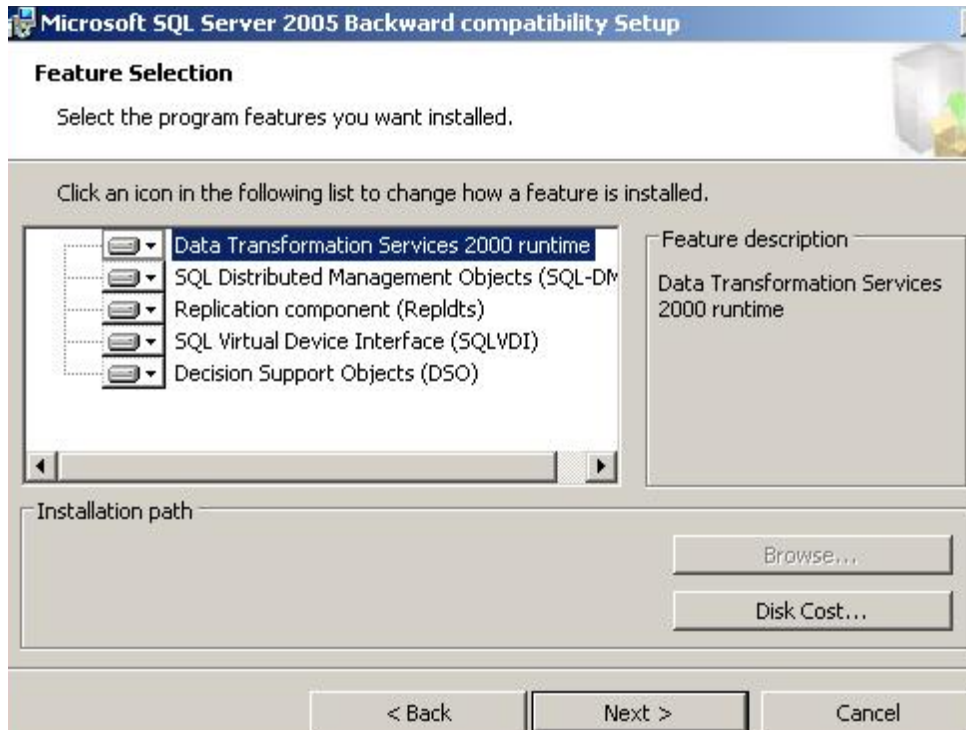


Figure 3-6. SQL Server 2005 Backward compatibility Setup - Feature Selection

6. Ready to install the Program is displayed. Click **Install**.

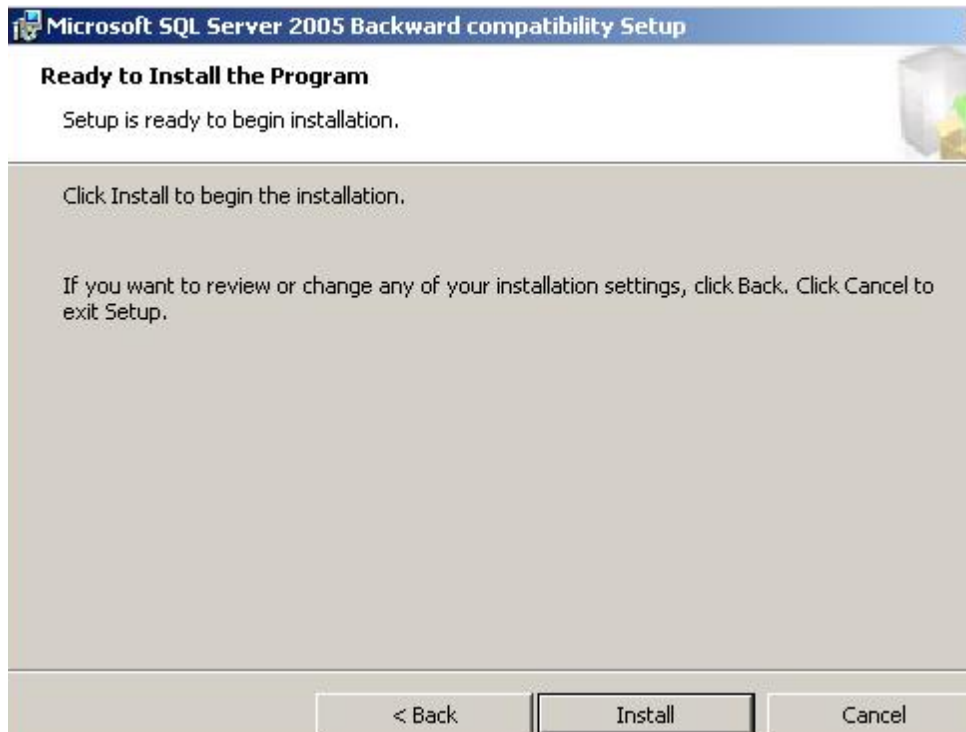


Figure 3-7. SQL Server 2005 Backward compatibility Setup - Ready to Install

7. Completing the Microsoft SQL Server 2005 Backward compatibility Setup is displayed. Click **Finish**.

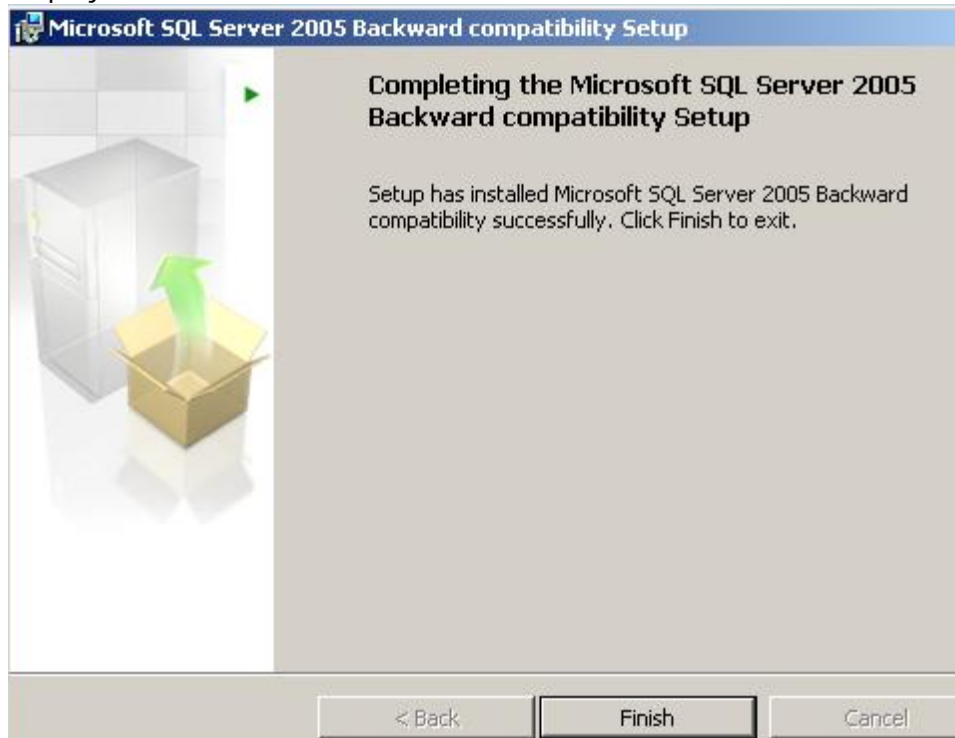


Figure 3-8. SQL Server 2005 Backward compatibility Setup - Completing Setup

---

## Chapter 4: **SQLServer 2008 Service Pack 1 Installation**

---

1. Run the SQL Server 2008 Service Pack 1 installation found on the Channel Partners Website on the ENCOR 1.0.0.0 iso. (It will extract the files.)

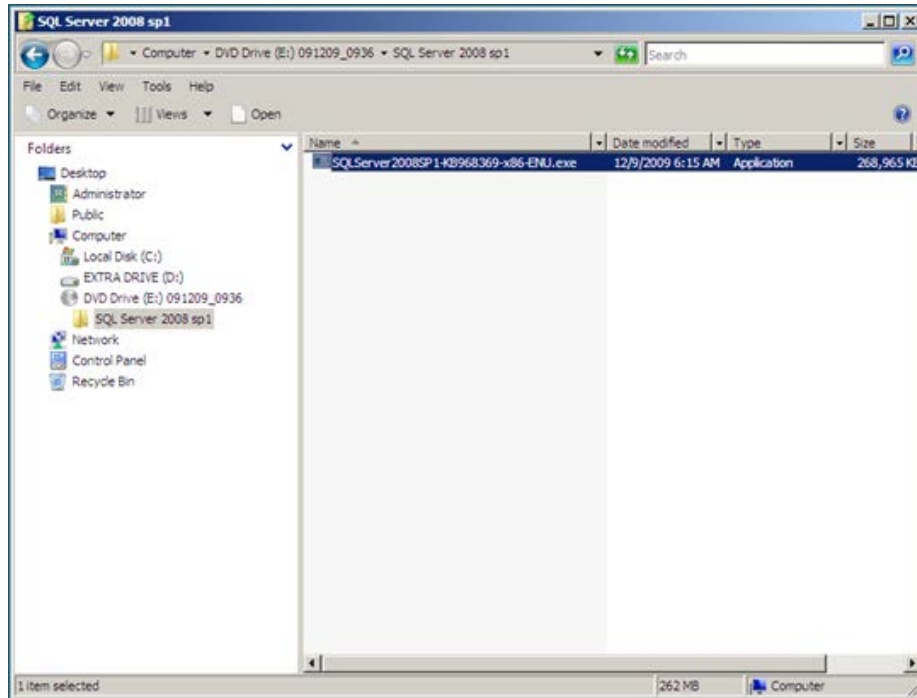
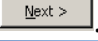


Figure 4-1. SQL Server 2008 sp1

2. The Welcome screen is displayed. Click .

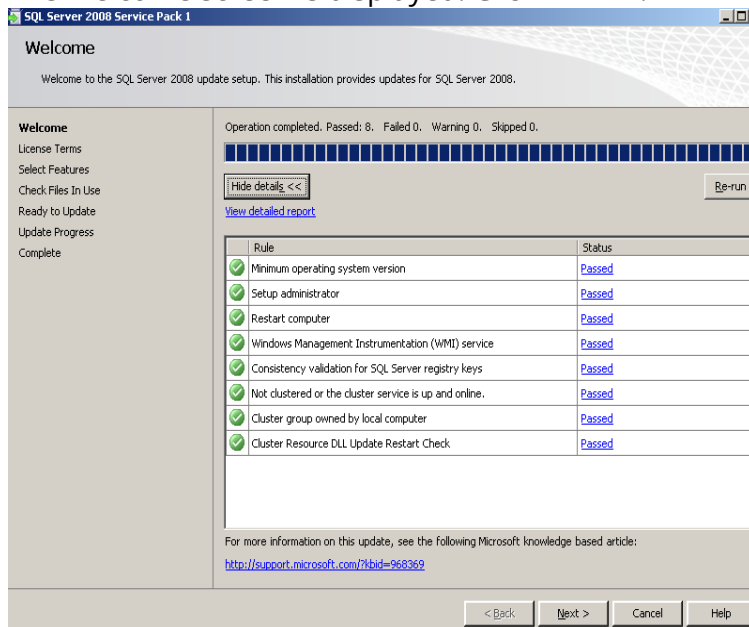


Figure 4-2. SQL Server 2008 Service Pack 1 - Welcome

3. The License Terms screen is displayed. Click , and click

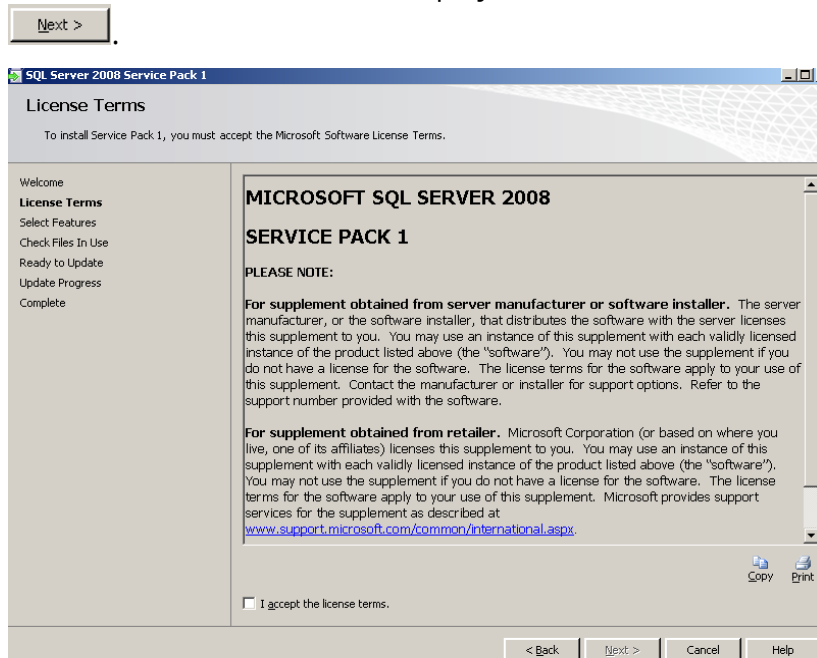


Figure 4-3. SQL Server 2008 Service Pack 1 - License Terms

4. The Select Features screen is displayed. Click .

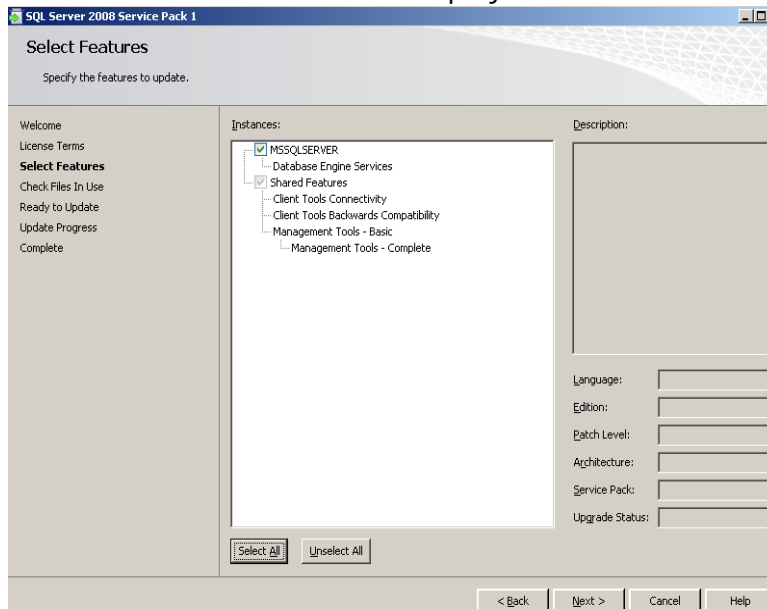
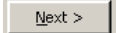


Figure 4-4. SQL Server 2008 Service Pack 1 - Select Features

5. The Check Files In Use screen is displayed. Click .

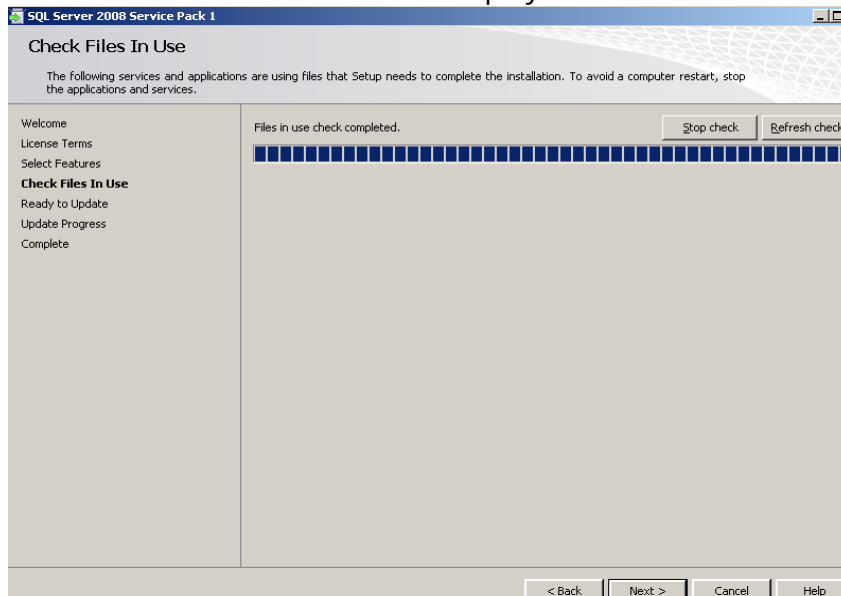


Figure 4-5. SQL Server 2008 Service Pack 1 - Check Files In Use

6. The Ready to Update screen is displayed. Click **Update**.

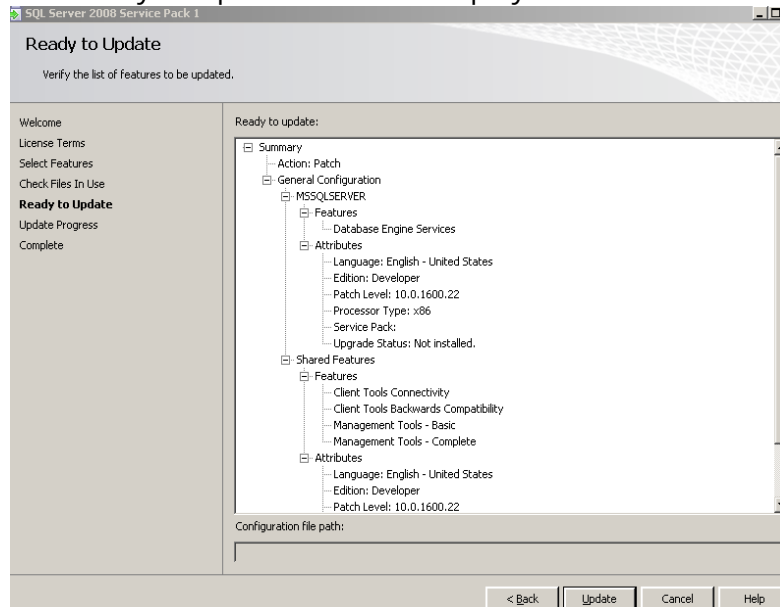


Figure 4-6. SQL Server 2008 Service Pack 1 - Ready to Update

7. The Update Progress screen is displayed. A green check mark (✓) should indicate success. Click **Next >**.

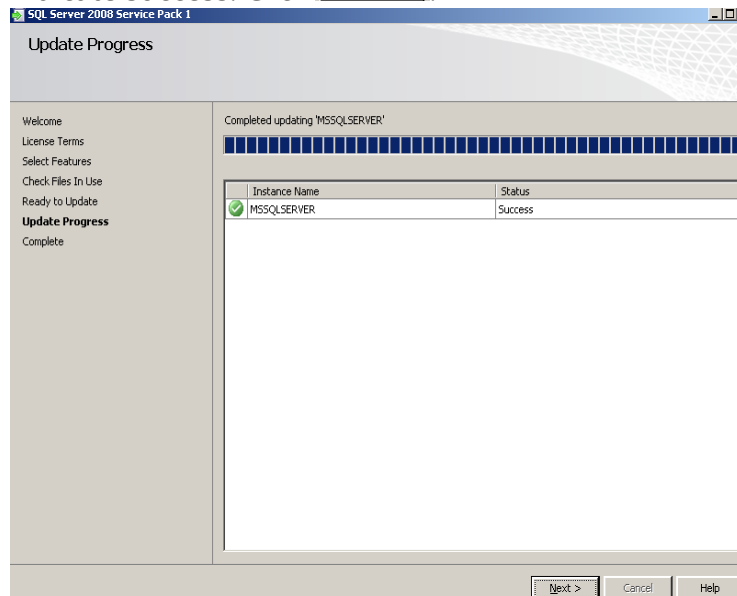
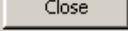


Figure 4-7. SQL Server 2008 Service Pack 1 - Update Progress

8. Verify success (✔), and click . It is recommended that MFS1 is rebooted now.

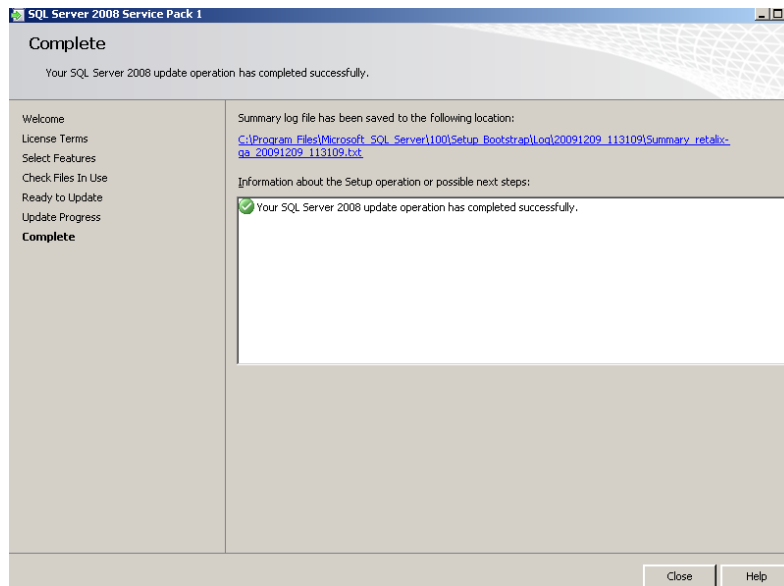
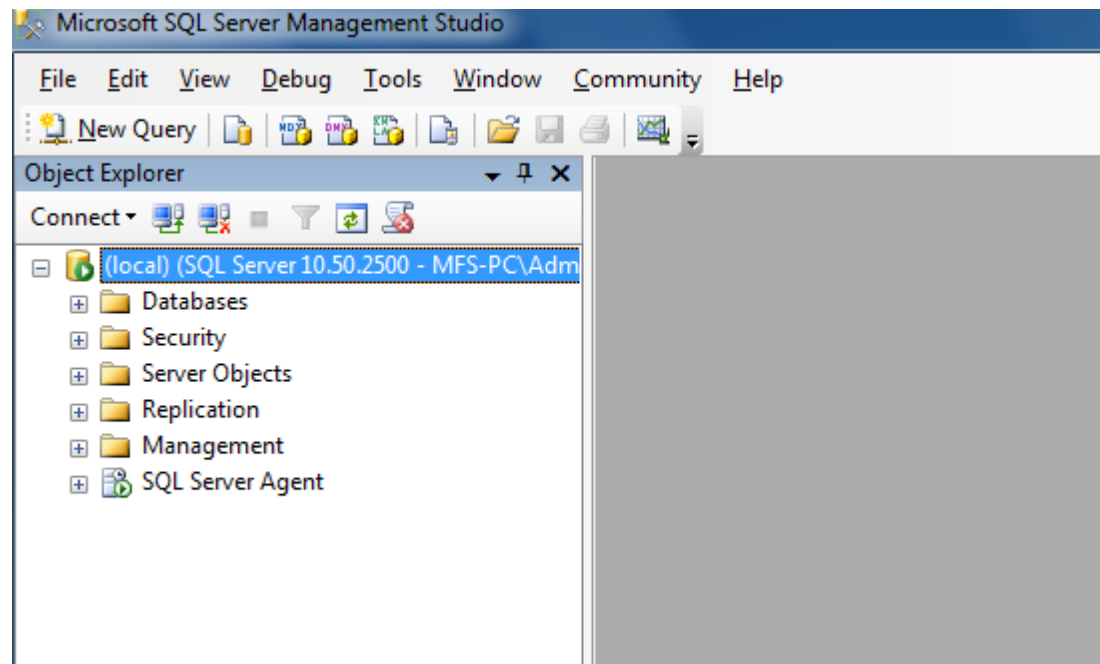


Figure 4-8. SQL Server 2008 Service Pack 1 - Complete

**NOTE:** To verify this was successful you must check the version in SQL Server Management Studio and verify it **shows 10.50.2500 NOT 10.50.1600.**



---

## Chapter 5: Enable Named Pipes

---

To allow for backwards compatibility with an LFS workstation, a change must be made once the installation of SQL 2008 has been completed. In previous versions of SQL and Windows, **ENCOR** used Named Pipes as the communications protocol for connections to the Front Office database on MFS1. However, Named Pipes are disabled by default in SQL 2008

1. Click **START > ALL PROGRAMS > MICROSOFT SQL Server 2008 > Configuration Tools > SQL Server Configuration Manager**.
2. Open the SQL Server Network Configuration folder.
3. Click on **Protocols for MSSQLSERVER**.

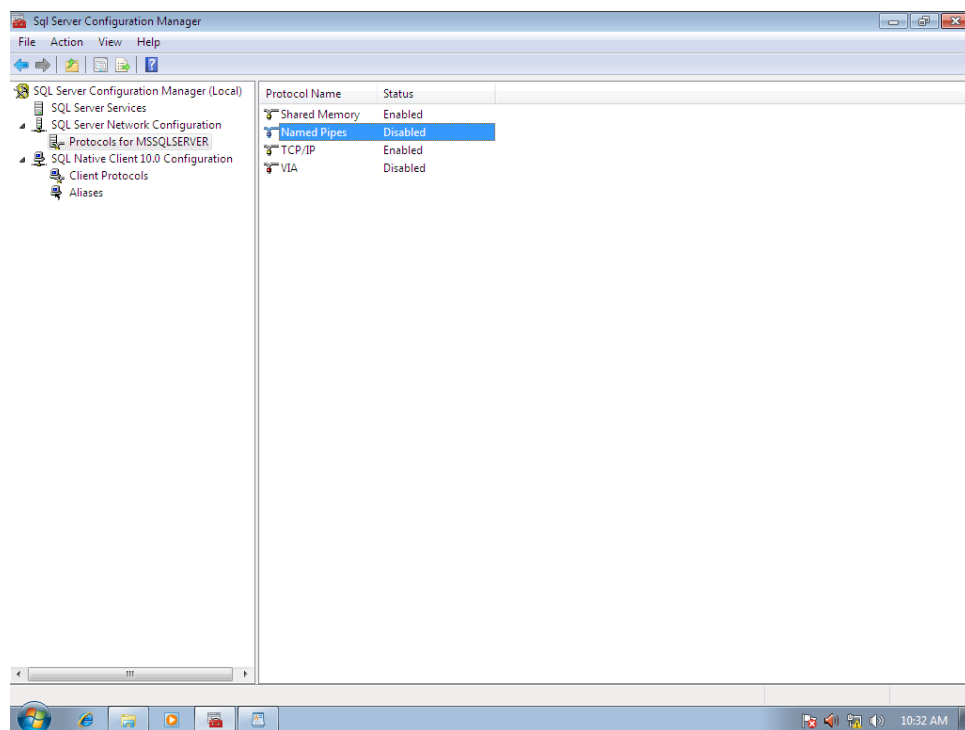


Figure 5-1. Sql Server Configuration Manager - Protocols for MSSQLSERVER

4. Double-click on **Named Pipes** and change the enabled value from NO to **YES**. Click **Apply**. Click **OK** to acknowledge the warning that changes will not take effect until the service is stopped and restarted.

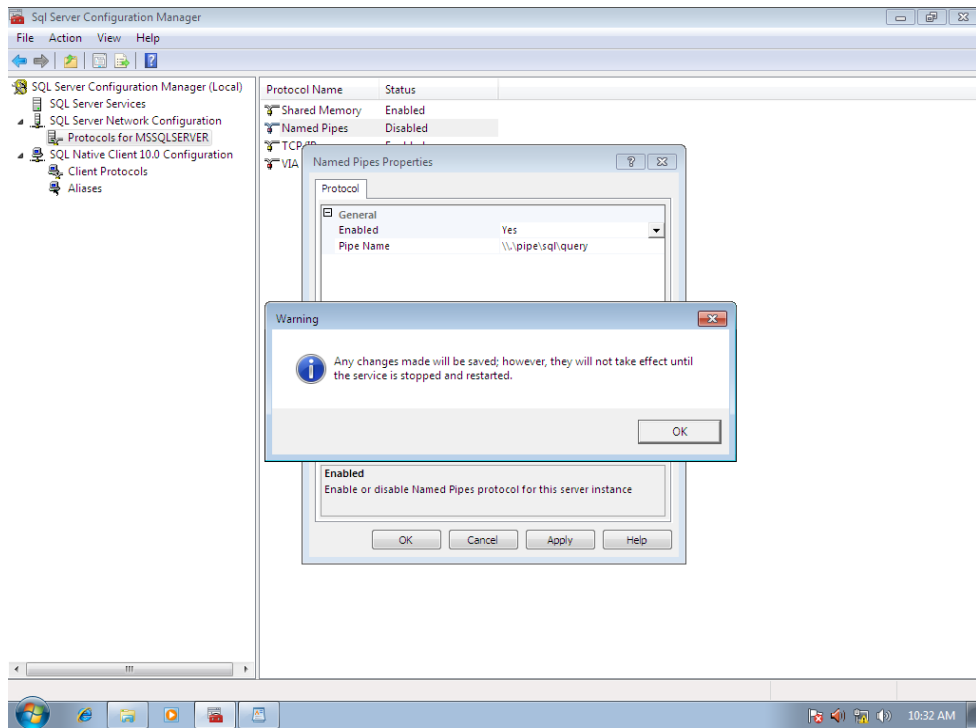


Figure 5-2. SQL Server Configuration Manager - Warning

5. Click **OK**, close all open windows, and reboot MFS1.

---

# Chapter 6: Disable Data Execution Prevention (DEP)

---

It is recommended that DEP be completely disabled on all **ENCOR** PCs.

DEP can be turned on for all applications, turned on for only certain applications, or can be completely turned off.

DEP settings can be changed through the GUI application, but a command level script must be run to completely disable the application.

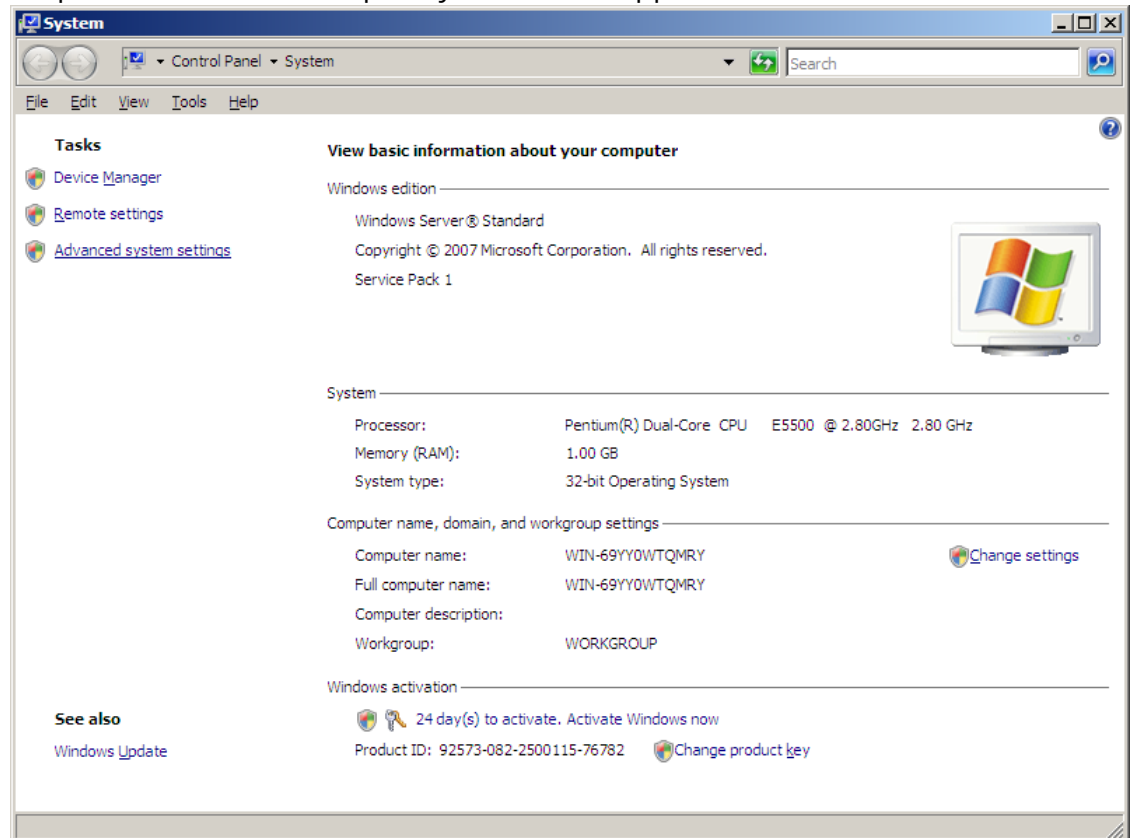


Figure 6-1. Control Panel - System

1. Check the current settings for DEP by opening the System application as shown below; then click on **Advanced system settings**.

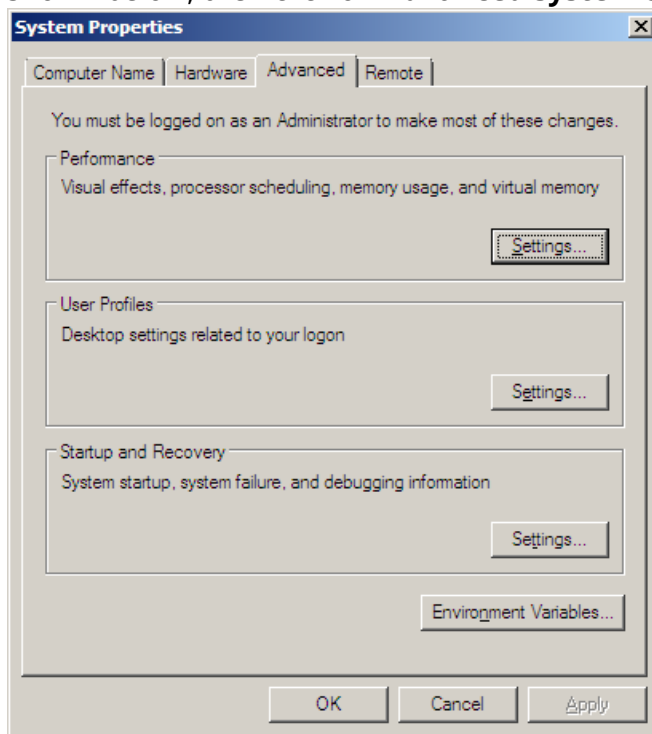


Figure 6-2. System Properties - Advanced Tab

2. Click on the **Advanced** tab followed by **Settings** in the Performance section.

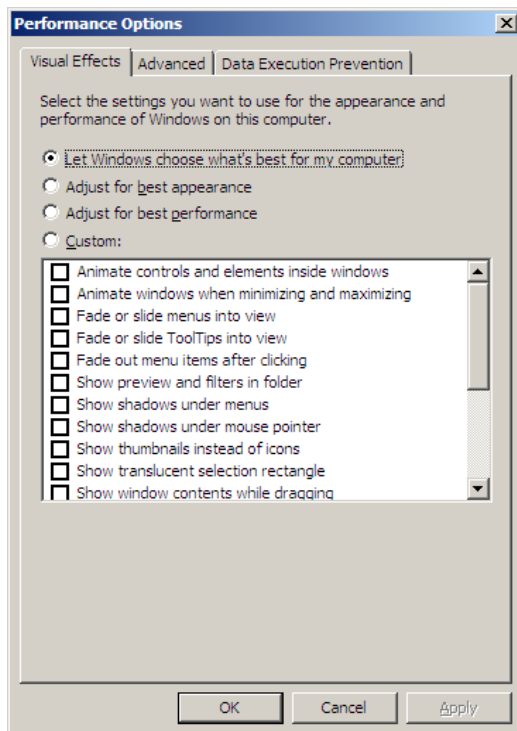


Figure 6-3. Performance Options - Visual Effects Tab

3. Click on the **Data Execution Prevention** tab.

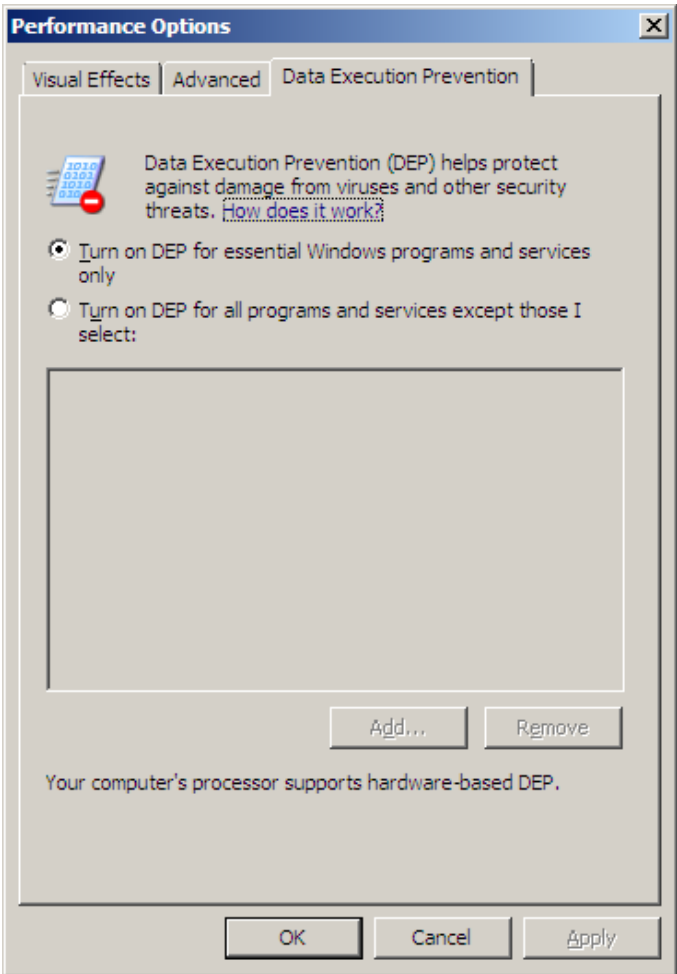


Figure 6-4. Performance Options - Data Execution Prevention Tab

4. In the above example, DEP is turned on for essential programs and services only.

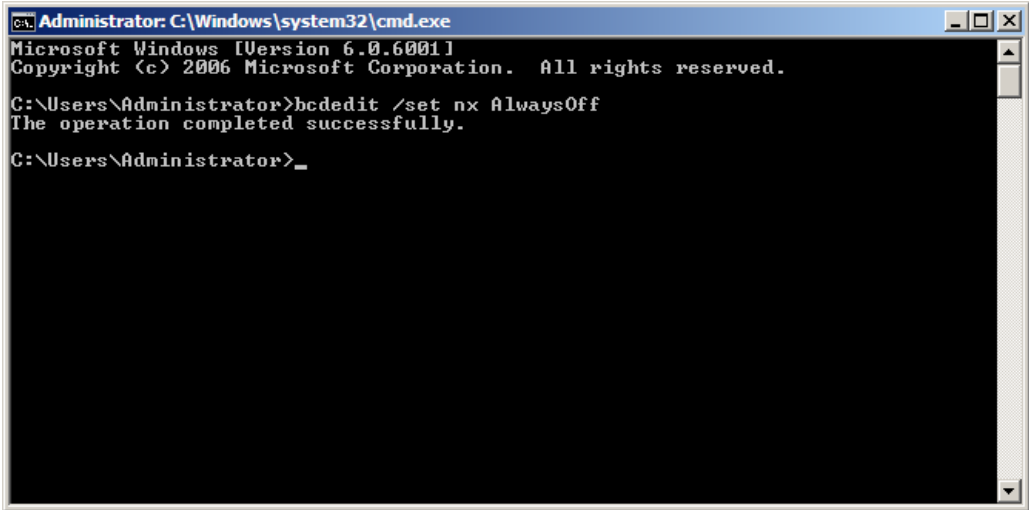


Figure 6-5. Command Prompt

5. Open a Command Line window and enter `bcdedit /set nx AlwaysOff`.
6. Reboot the PC and then check the status of DEP.

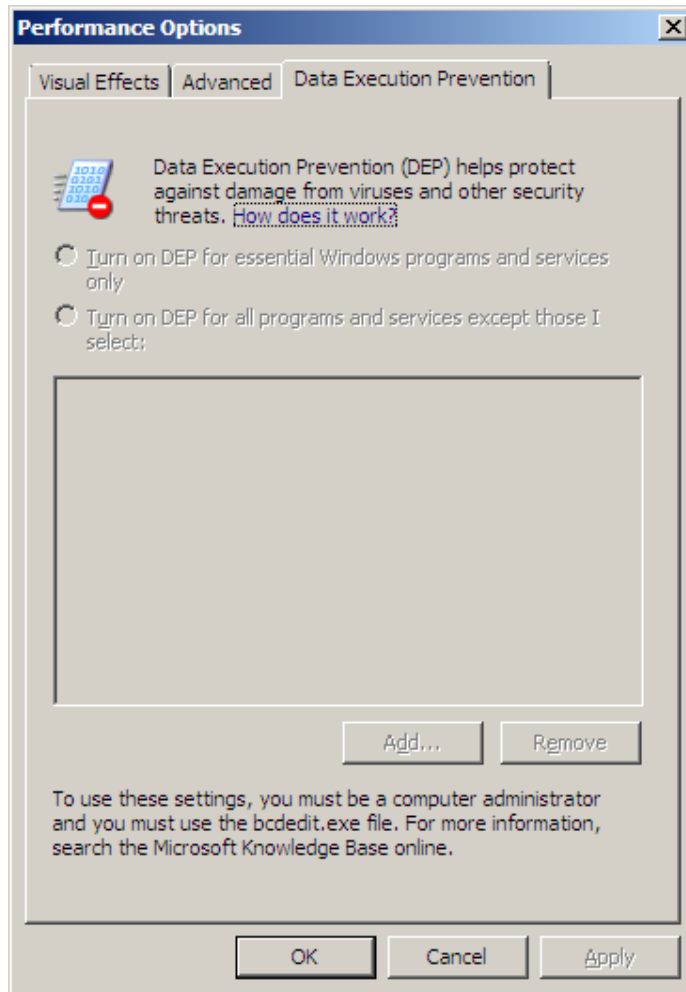


Figure 6-6. Performance Options - Data Execution Prevention Tab

**Note:**

Both options are now grayed out above. This indicates that DEP is completely disabled for this machine.

7. The system is now ready for the **ENCOR** installation.



© NCR Corporation, 2018

NCR endeavors to ensure that the information in this document is correct and fairly stated but does not accept liability for any error or omission.

The development of NCR products and services is continuous and published information may not be up to date. It is important to check the current position with NCR. This document is not part of a contract or license, save insofar as may be expressly agreed.

---

NCR Corporation  
2651 Satellite Blvd.  
Duluth, GA 30096

P/N 89000926  
PIN 45002/074